



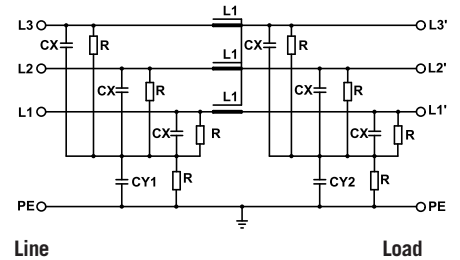
## ELECTRIC CHARACTERISTICS

Nominal Voltage	0/750	V <sub>AC</sub> - 50/60 Hz
Phase to phase test voltage	3100	V <sub>DC</sub> (2 s)
Phase to ground test voltage	3500	V <sub>AC</sub> - 50Hz (2 s)
Climatic class	-25 / +85 °C	



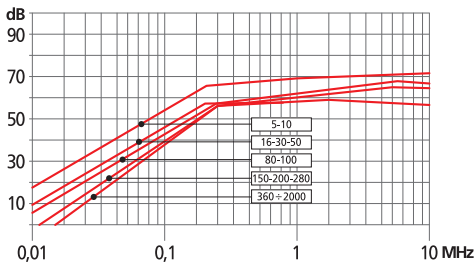
FIN 1200HV	Nominal current (A)		$\Sigma Cx$ ( $\mu F$ ) $\pm 5\%$	Cy1 (nF) $\pm 5\%$	Cy2 (nF) $\pm 5\%$	L1 (mH) $\pm 10\%$	Pow loss (W)
	TA=40°C	TA=50°C					
.016.V	16	16	48	100	100	2	14
.030.V	30	29	48	100	100	2	11
.050.V	50	48	48	100	100	2	10
.080.V	80	78	48	100	100	1.8	35
.100.V	100	96	48	100	100	1.5	42
.150.V	150	146	48	100	100	1.3	74
.200.V	200	195	48	100	100	0.9	90
.280.V	280	275	48	100	100	0.8	80
.280.B	280	280	48	100	100	0.8	78
.360.B	360	355	48	100	100	0.35	152
.500.B	510	500	48	100	100	0.35	196
.750.B	760	750	48	100	100	0.23	98
.1000.B	1050	1000	48	100	100	0.22	101
.1250.B	1300	1250	48	100	100	0.21	105
.1500.B	1550	1500	48	100	100	0.20	120
.1750.B	1800	1750	48	100	100	0.20	130
.2000.B	2050	2000	48	100	100	0.18	140

## FIN1200HV ELECTRIC DIAGRAM

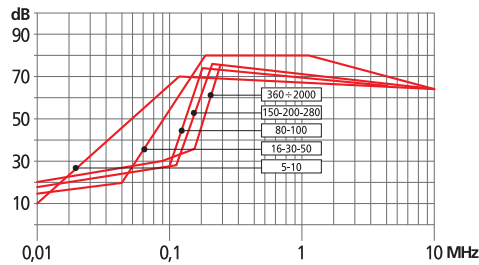


Total leakage current at 230 V phase to ground 50 Hz / 40°C  
 Nominal <3mA  
 Worst condition <10mA

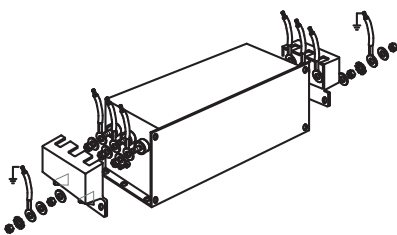
## COMMON MODE ATTENUATION



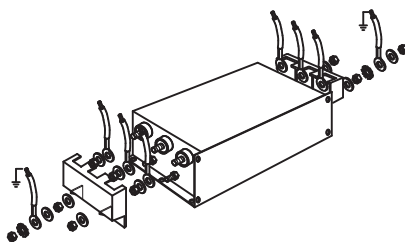
## DIFFERENTIAL MODE ATTENUATION



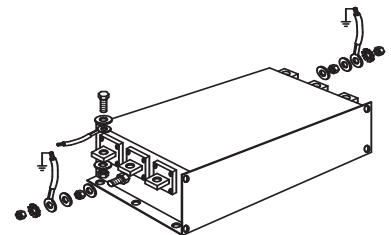
## CASE 1/2/3 ASSEMBLING



## CASE 4 ASSEMBLING



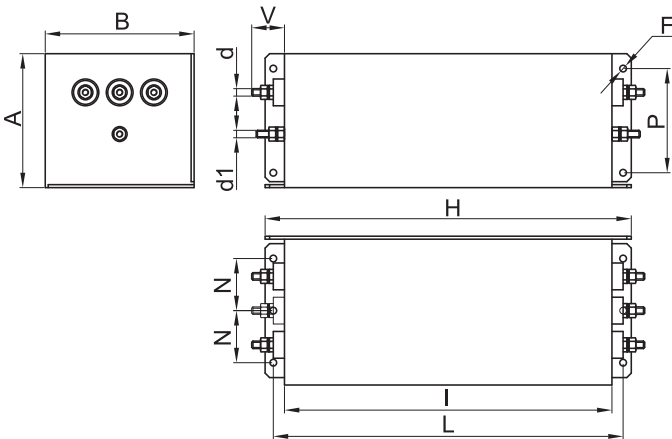
## CASE 5/6/7/8 ASSEMBLING



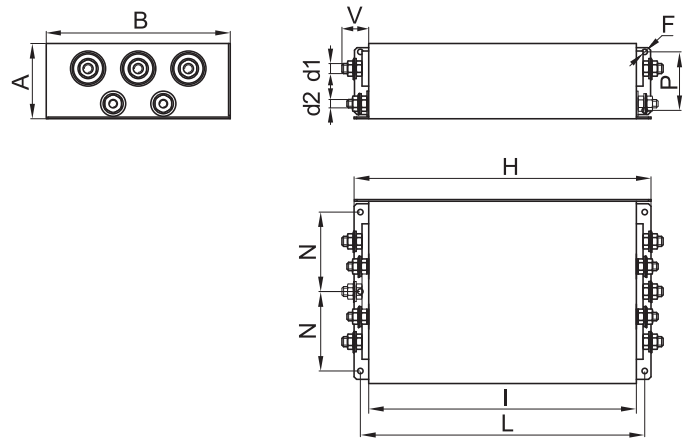
## MECHANICAL DIMENSIONS (mm)

FIN1200HHV	A	B	d (ø)	d1	d2	d3	V	F	H	I	L	N	P	Weight Kg	Case
.016.V/.030.V	90	100	M5	M 5	—	—	20,5	4,5	246	220	235	35	70	3,6-3,8	2
.050.V	90	100	M6	M 5	—	—	28	4,5	246	220	235	35	70	4,1	2
.080.V/.100.V	90	185	M8	M 8	—	—	25	6,5	356	320	340	77,5	70	11,7	3
.150.V/.200.V	90	220	M10	M 10	M 10	—	29	6,5	356	320	340	95	70	14,4-15,8	4
.280.V	90	220	M12	M 12	M 10	—	30	6,5	356	320	340	95	70	16,1	4
.280.B	90	220	8,5	M 12	10	25	42	6,5	356	320	340	95	70	16,9	5
.360.B	130	230	8,5	M 10	10	25	42	6,5	420	380	400	100	100	24,7	5
.500.B	130	230	10,5	M 10	15	30	48	6,5	510	450	480	100	100	30,5	6
.750.B	160	250	13,5	M 12	20	40	94	8,5	510	450	480	100	110	31	7
.1000.B	180	350	13,5	M 12	20	60	97	8,5	610	550	580	150	130	59	8
.1250.B	180	350	13,5	M 12	20	60	97	8,5	610	550	580	150	130	59	8
.1500.B	180	350	13,5	M 12	20	60	97	8,5	610	550	580	150	130	59	8
.1750.B	180	350	13,5	M 12	20	60	97	8,5	610	550	580	150	130	59	8
.2000.B	180	350	13,5	M 12	20	60	97	8,5	610	550	580	150	130	59	8

### CASE 2/3



### CASE 4



### CASE 5/6/7/8

