



## ELECTRIC CHARACTERISTICS

Nominal Voltage	0/250 V <sub>AC</sub> - 50/60 Hz
Phase to phase test voltage	1450 V <sub>DC</sub> (2 s)
Phase to ground test voltage	2150 V (2 s)
Climatic class	-25 / +85 °C



UL1283

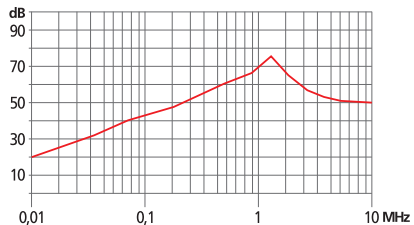
CSA C22.2

\* S.C.C.R. In according to UL508

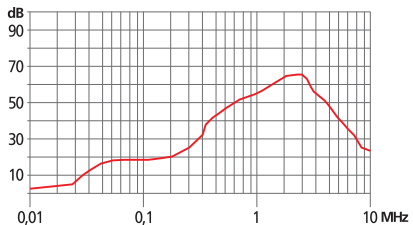
FIN 26	Rated current 40°C	ΣCx (nF) ± 5%	Cy1 (nF) ± 5%	Cy2 (nF) ± 5%	L1 (mH) ± 10%	S.C.C.R.* (kA)	Max Fuse (200kA RK5 TD)	Pow loss (W)
.003.M	3	136	22	22	2.2	5*	25A 600 Vac	1.5
.006.M	6	136	22	22	2.2	5*	25A 600 Vac	2.1
.010.M	10	136	22	22	2.1	5*	25A 600 Vac	2.8
.016.M	16	136	22	22	2.1	5*	25A 600 Vac	3.2
.020.M	20	136	22	22	2.0	5*	25A 600 Vac	4

Leakage current at 230 V phase to ground- 50 Hz / 40°C < 1mA

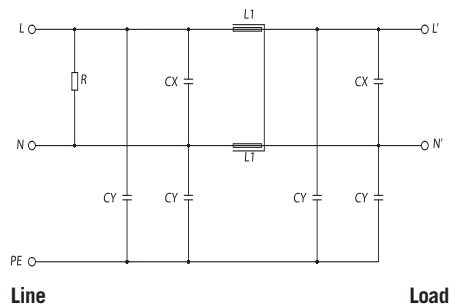
## COMMON MODE ATTENUATION



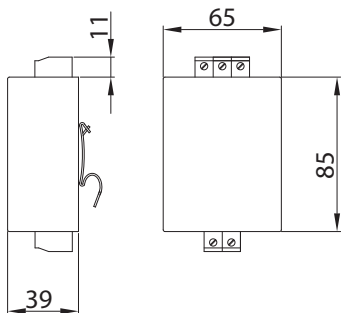
## DIFFERENTIAL MODE ATTENUATION



## ELECTRIC DIAGRAM



## CASE 1



## ASSEMBLING

