

ELECTRIC CHARACTERISTICS

Nominal Voltage	0/600 V _{ac} - 50/60 Hz
Phase to phase test voltage	3300 V _{dc} (2 s)
Phase to ground test voltage	3100 V _{dc} (2 s)
Climatic class	-25 / +85 °C

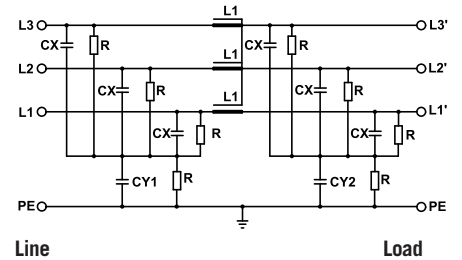


UL1283
CSA C22.2

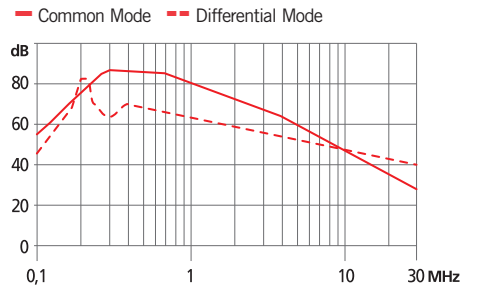
* S.C.C.R. In according to UL508

FIN538S1	Rated current 40°C (50°C)	ΣCx (μF) $\pm 5\%$	Cy1 (nF) $\pm 5\%$	Cy2 (nF) $\pm 5\%$	L1 (mH) $\pm 10\%$	S.C.C.R.* (kA)	Max Fuse (200kA RK5 TD)	Pow loss (W)
.007.M	8 (7)	20	1000	1000	1.5	5*	10A 600 Vac	3
.016.M	18 (16)	20	1000	1000	1.5	5*	45A 600 Vac	4
.030.M	34 (30)	60	1000	1000	1.4	5*	50A 600 Vac	10
.042.M	47 (42)	60	1000	1000	1.3	5*	90A 600 Vac	18
.055.M	60 (55)	60	1000	1000	1.2	5*	100A 600 Vac	23
.075.M	83 (75)	60	1000	1000	1.1	5*	175A 600 Vac	37
.100.M	110 (100)	60	1000	1000	1.1	5*	125A 600 Vac	52
.130.M	142 (130)	60	1000	1000	1	10*	175A 600 Vac	65
.180.M	200 (180)	60	1000	1000	1	-	250A**	77
.250.V	272 (250)	60	1000	1000	0.7	-	350A**	80
.360.B	390 (360)	60	1000	1000	0.6	-	**	105
.400.B	435 (400)	60	1000	1000	0.6	-	**	110
.500.B	545 (500)	60	1000	1000	0.55	-	**	102
.600.B	654 (600)	60	1000	1000	0.55	-	**	108
.750.B	800 (750)	60	1000	1000	0.5	-	**	96
.1000.B	1050 (1000)	60	1000	1000	0.45	-	**	115
.1250.B	1290 (1250)	60	1000	1000	0.45	-	**	101
.1500.B	1550 (1500)	60	1000	1000	0.45	-	**	120

FIN538S1 ELECTRIC DIAGRAM



INSERTION LOSS

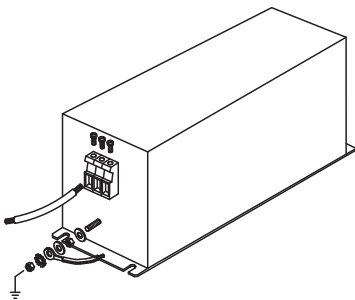


Total leakage current at 230 V phase to ground 50 Hz / 40°C

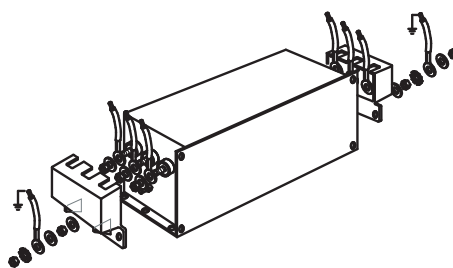
Nominal <10mA
Worst condition <80mA

**Max 10kA should be provided by branch circuit fuse or a circuit breaker that clears the overcurrent fault within 3 cycles

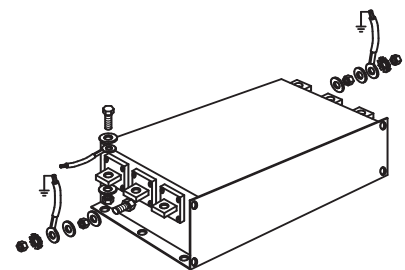
CASE 1 ASSEMBLING



CASE 2 ASSEMBLING



CASE 3 ASSEMBLING



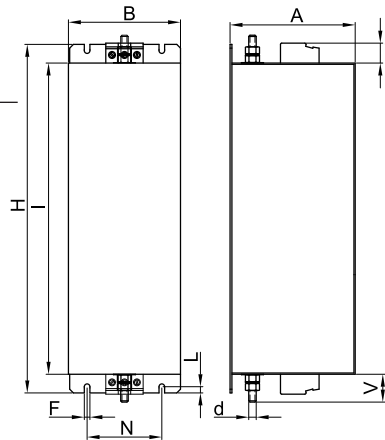
MECHANICAL DIMENSIONS (mm)

FIN538S1	A	B	V	V1	F	H	I	L	N	d	Peso Kg Weight Kg
.007.M	100	90	22	16	5,4	250	220	7,5	60	M6	1,3
.016.M	100	90	22	16	5,4	250	220	7,5	60	M6	1,3
.030.M	100	90	22	16	5,4	250	220	7,5	60	M6	1,3
.042.M	100	90	22	35	5,4	250	220	7,5	60	M6	1,5
.055.M	100	90	22	35	5,4	250	220	7,5	60	M6	1,7
.075.M	135	85	22	37	6,5	270	240	7,5	60	M6	2,2
.100.M/.130.M	155	90	23,5	43	6,5	270	240	7,5	65	M10	3,2
.180.M	170	125	26	51	6,5	380	350	7,5	102	M10	5,1

TERMINAL BLOCK (mm²)

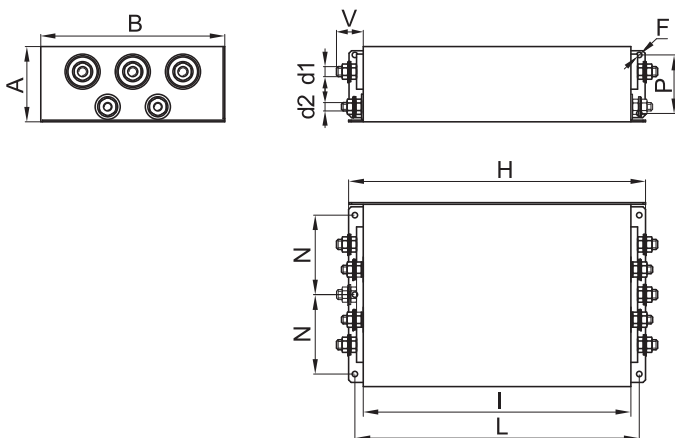
Terminals	Rigid Cable	Flexible Cable
K6	0.2 - 10	0.2 - 6
K6	0.2 - 10	0.2 - 6
K6	0.2 - 10	0.2 - 6
K10	0.5 - 16	0.5 - 10
K10	0.5 - 16	0.5 - 10
K25	6 - 35	10 - 25
K50	16 - 50	16 - 50
K95	25 - 95	35 - 95

CASE 1



FIN538S1	A	B	d (ø)	d1	d2	d3	V	F	H	I	L	N	P	Weight Kg	Case
.250.V	90	220	—	M 12	M 10	—	30	6,5	355	320	340	95	70	16	2
.360.B	130	230	8,5	M 10	10	25	42	6,5	420	380	400	100	100	23,5	3
.400.B	130	230	8,5	M 10	10	25	42	6,5	420	380	400	100	100	24,7	3
.500.B	130	230	10,5	M 10	15	30	48	6,5	510	450	480	100	100	30,5	3
.600.B	130	230	10,5	M 10	15	30	48	6,5	510	450	480	100	100	31	3
.750.B	160	250	14	M 12	20	40	94	8,5	510	450	480	100	110	31	3
.1000.B	160	250	14	M 12	20	40	94	8,5	510	450	480	100	110	35	3
.1250.B	180	350	14	M 12	20	60	97	8,5	610	550	580	150	130	55	3
.1500.B	180	350	14	M 12	20	60	97	8,5	610	550	580	150	130	55	3

CASE 2



CASE 3

