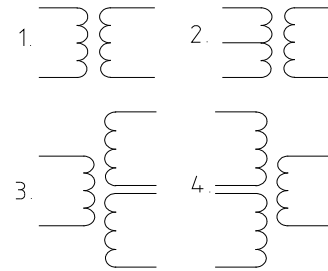



ELECTRIC CHARACTERISTICS

| | |
|--------------------------|----------|
| Rated frequency | 50/60 Hz |
| Electric strength | 4kV |
| Insulation class | B |
| Max. ambient temperature | 70°C |


ELECTRIC DIAGRAM


| EI 84 | Max. output power (VA) | PRI (V) | SEC (V) | Short circuit protection |
|--------------|------------------------|---------|---------|------------------------------------|
| -21F/... | 85 | 115-250 | 3-24 | Non-inherently short circuit proof |
| -31F/... | 100 | 115-250 | 3-24 | Non-inherently short circuit proof |
| -44/... | 100 | 115-250 | 3-24 | Not short-circuit proof |

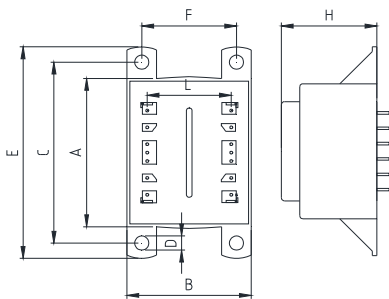
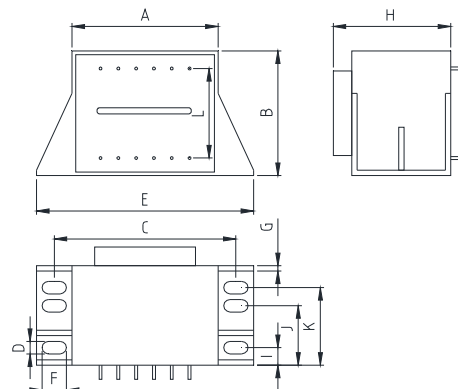
Approved to EN 61558
Safety class II

CONNECTION

Solder pins Ø 0,8 mm

MECHANICAL DIMENSIONS (mm)

| EI 84 | A | B | C | D | E | F | G | H | I | J | K | L | Weight (g) | Case |
|--------------|------|------|-------|-----|-------|----|-----|------|------|------|------|----|------------|------|
| -21/... | 93,5 | 85,5 | 102,5 | 5,5 | 120 | 10 | 2,5 | 63,8 | 10,6 | 34 | 42,8 | 45 | 1680 | V |
| -31/... | 93,5 | 75,5 | 102,5 | 5,5 | 120 | 10 | 2,5 | 77,8 | 10,6 | 37,8 | 55,5 | 45 | 2150 | V |
| -44/... | 88,1 | 74,1 | 97,5 | 4,2 | 107,5 | 60 | - | 76,5 | - | - | - | 45 | 2150 | KK |

CASE "KK"

CASE "V"


Further versions, prim. or sec. voltages, pin configurations on request.